



The Peace River Nuclear Power Project

M.D. of Peace No. 135

January 13, 2026

Land Acknowledgment

Energy Alberta would like to respectfully acknowledge that we are gathered today on the traditional lands of the Treaty 8 First Nations.

This region, including the Peace River area, has been home to the Dane-zaa (Beaver), Cree, Dene Tha', and Métis peoples for generations. We honor and recognize their deep connection to this land, water, and sky, as well as their enduring stewardship and contributions to these territories.

As we acknowledge the history and resilience of the Indigenous peoples of this area, we also commit to fostering respectful relationships, learning from their knowledge, and working together toward reconciliation.

Let this acknowledgment serve as a reminder of our shared responsibility to care for the land and to support the healing and strengthening of our communities.



Agenda

- Proposed Project Overview
- Stakeholder Engagement
- Socio-Economic Assessment
- Next Steps in Collaboration



The Proposed Project

- Permitting 4800 MW of Nuclear power
- Building two to four 1,000MW-class reactors 30 km north of Peace River

Our Commitment

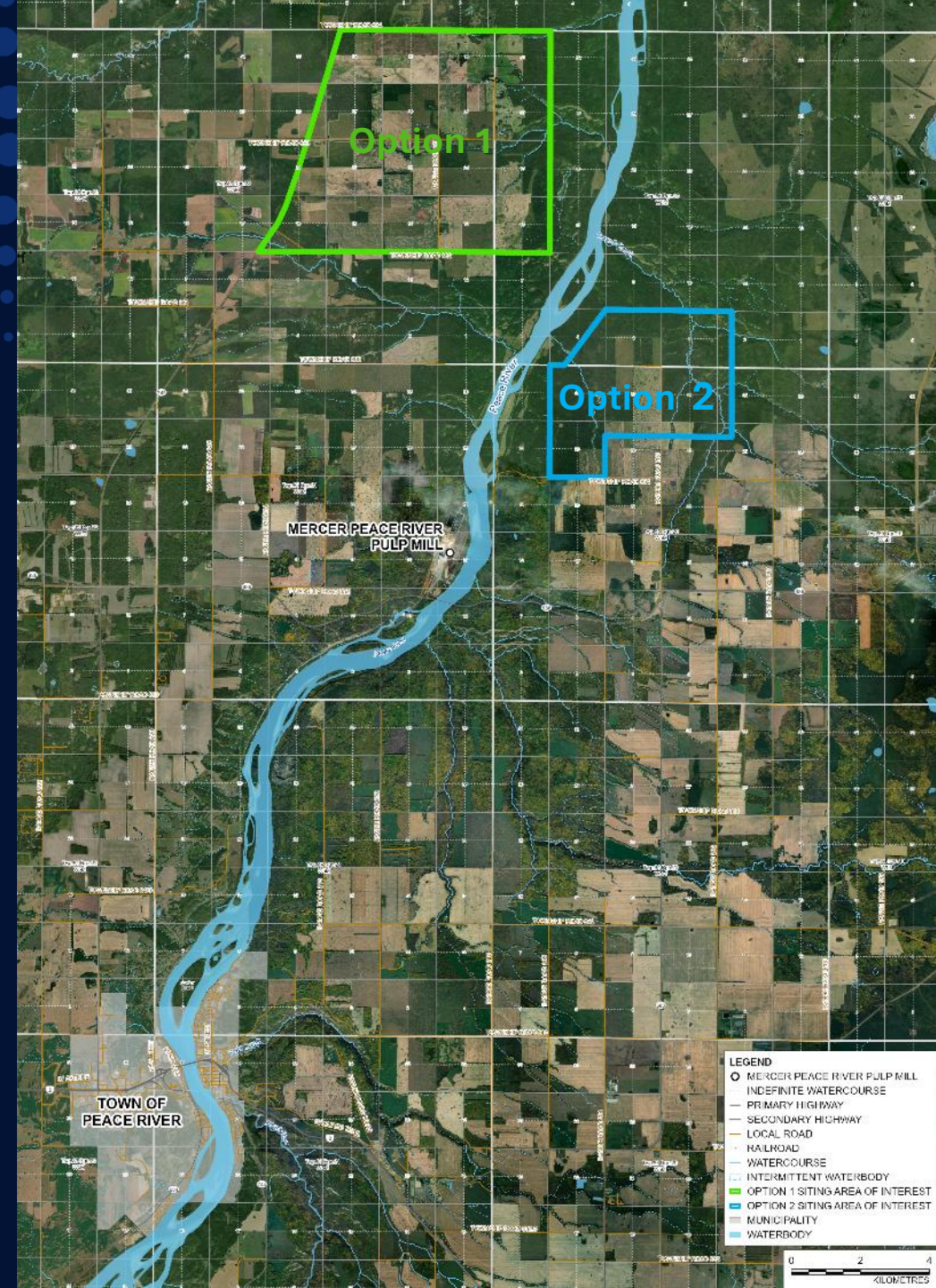
The proposed Peace River Nuclear Power Project is in the early regulatory phase, marking the beginning of meaningful engagement with local communities and Indigenous Nations. This collaboration is a cornerstone of the Project and will continue throughout every stage — from regulatory review to construction and long-term operations — ensuring the Project is built on trust, transparency and shared opportunity.



Why the Peace River Area?

Studies conducted between 2005 and 2010 indicated the area is suitable for a 4,800 MW nuclear power generation facility. The key factors included:

1. Favourable ground conditions with good access to transportation and transmission infrastructure.
2. A local workforce with opportunities for growth and community development.
3. Growing regional power demand.
4. Large watercourse suitable as a cooling water source.



Project Stages

Regulatory Process (2025 – 2028)

- Initial Planning
- Site Selection
- Impact Assessment
- Obtain License to Prepare Site

Site Preparation (2028-2030)

- Site Preparation
- Obtain License to Construct

Construction (2029– 2041)

- Preparation
- Construct & Commission First Two Units (2029-2035)
- Obtain License to Operate

Operations (2035- 2115)

- 2035 - Unit 1
- 2038 – Unit 2
- 2040 – Unit 3
- 2043 – Unit 4

The Project timelines are based on regulatory guidance and early project planning and are subject to change.

September 2025

Public Engagement Sessions

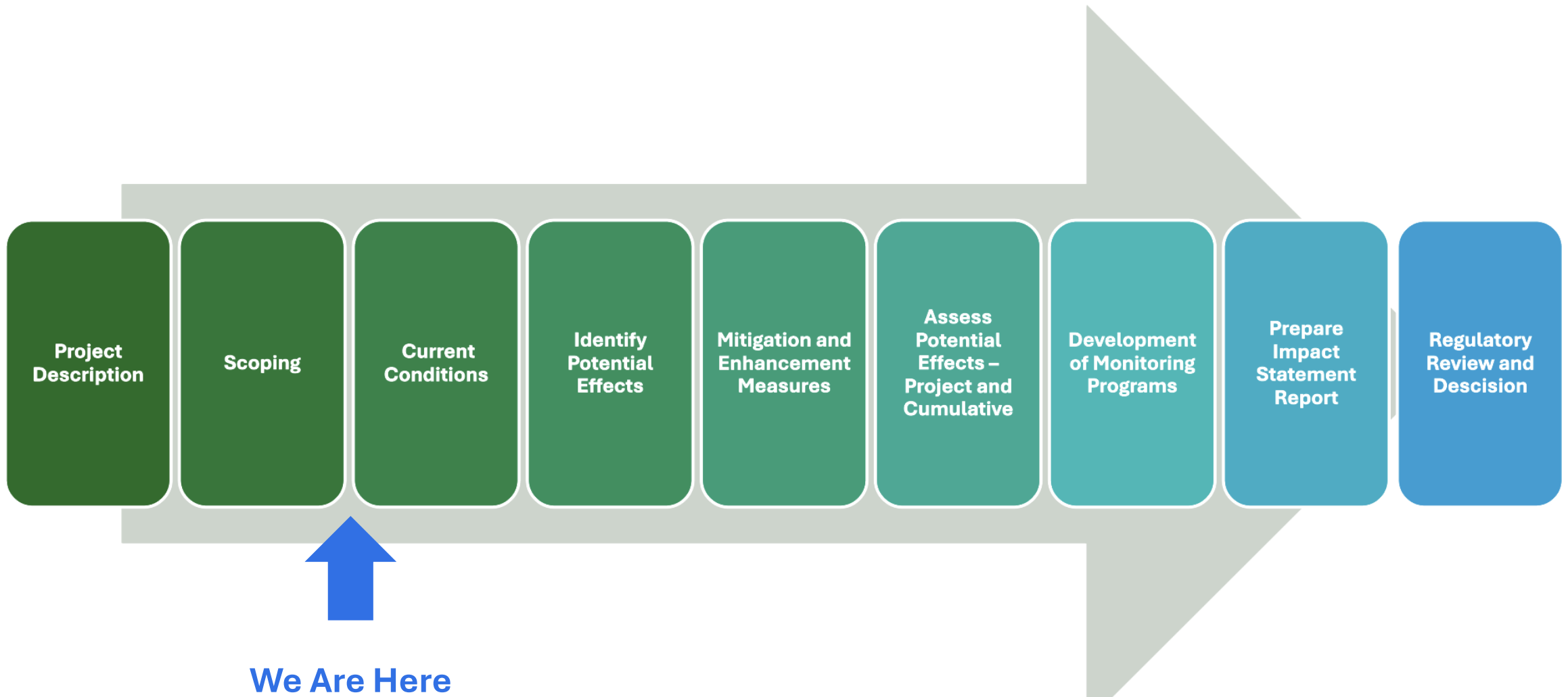
- Energy Alberta held four (4) public engagement sessions in the Region. More than 240 people attended to take a deeper dive into topics of interest and share their feedback

Community feedback

- Communities emphasized the importance of **transparent information, ongoing updates, and continued dialogue**
- Attendees valued opportunities to speak directly with technical experts and the project team
- While the feedback demonstrated a balance of perspectives and interest; we also heard concerns raised regarding:
 - Environmental effects
 - Safety
 - Long-term nuclear waste management
 - Negative impacts to local economy, infrastructure and social services



Assessment of Potential Effects



Assessment Considerations



Atmosphere

- Air quality
- Noise and light
- Visual
- Climate



Land

- Terrain and soils
- Vegetation
- Wildlife and wildlife habitat



Water

- Groundwater
- Surface water
- Fish and fish habitat



People

- Economy
- Social
- Health

Community Impacts - What We're Studying

A socio-economic assessment covers potential economic, social and health impacts

- **The big question:** How will this project change the way people live, work and enjoy life here?
- **Our approach:**
 - **Balanced:** maximize benefits, minimize potential negative impacts.
 - **Across all phases:** construction, operations and decommissioning.
 - **Community-driven:** input shapes the areas we study and the mitigation and enhancement plans
 - **Collaboration is key:** what local information is available, how to work together; collaborate to build Project scenarios into public service planning.

Community Impacts: Detailed Studies

Engagement and Research will Continue over next 12-18 Months



Economic

- Labour Supply and Demand Analysis (including population change scenarios)
- Training and Education Program Scan
- Regional Business Registry and Capacity Review
- Economic Effects Study



Social

- Community Profiles, Baseline Conditions
- Housing and Infrastructure Study
- Transportation Study



Health

- Human Health Risk Assessment
- Health/Wellbeing Impact Assessment



Indigenous Peoples

- Cultural heritage analyses
- Traditional Land and Resource studies
- Community profiles – economic, social, health
- Health/wellbeing impact assessments
- Rights and Interests Evaluations

Next Steps

- **Proposing regional community working group to collaborate on socio-economic studies**
 - Proposing a working group of regional municipal and service organizations to guide and inform studies
 - Begin meeting around late Q1 2026, meet quarterly or as needed during assessment period (2026 – 2027).
 - Objectives:
 - Contribute to baseline studies - bring forward community priorities, information, identify vulnerable groups
 - Contribute to effects analysis, mitigation and enhancement options
 - Promote transparency and collaboration
 - Seeking confirmation if staff representative from your municipality would participate
- **Other Updates**
 - Update on Regulatory Pause & Timeline, including updates to Initial Project Description (IPD)
 - Future engagement opportunities:
 - Quarterly CAO Meetings
 - Community Pop Ups, local business engagement
 - Future and ongoing delegations



Thank you!

Contact:

Katie McKinnon

katie.mckinnon@energyalberta.com

EnergyAlberta.com